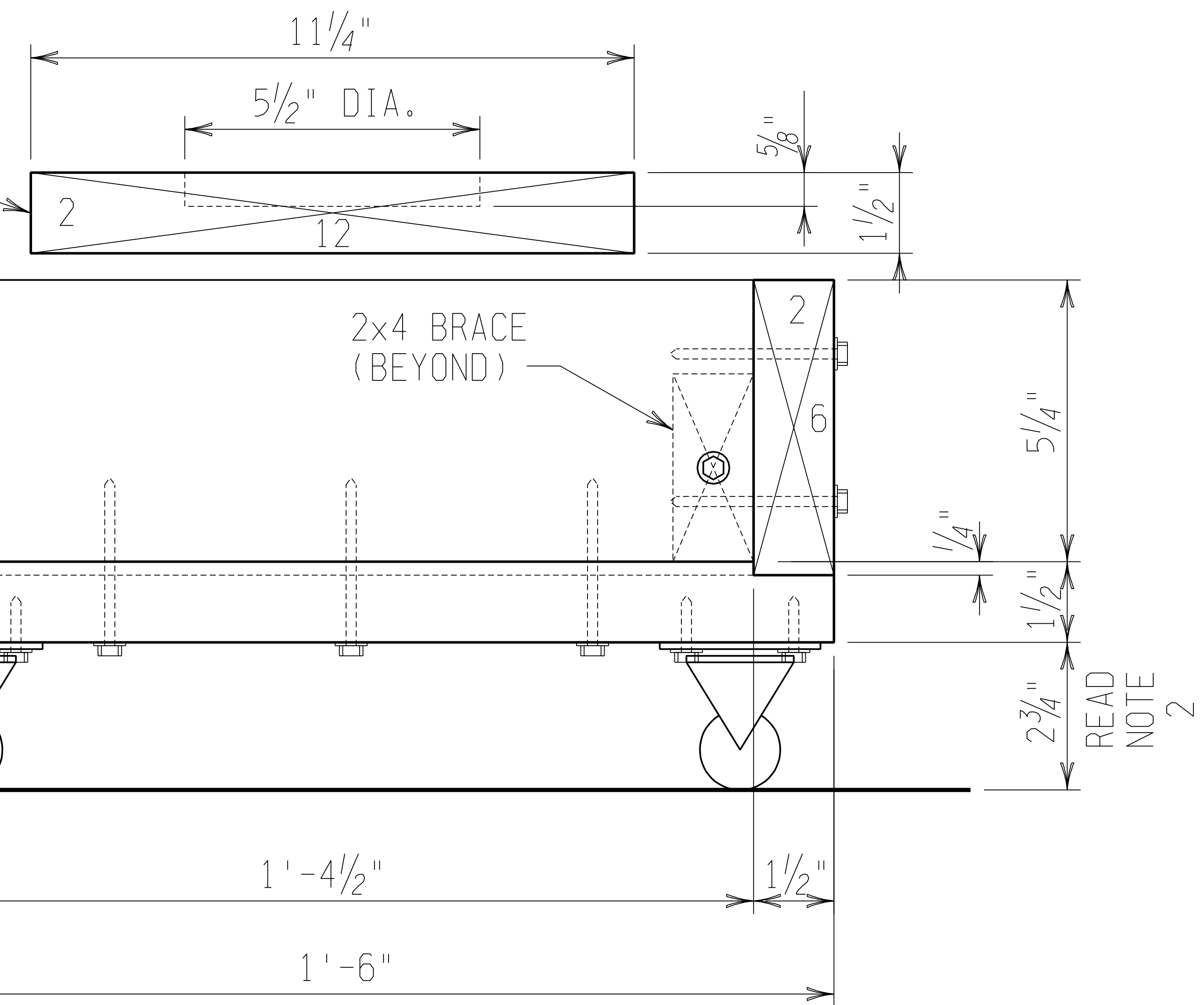


REAR VIEW

ENGINE CRADLE (2x12 W/
A 5 1/2" DIAMETER x 5/8"
DEEP POCKET FOR THE SUMP)

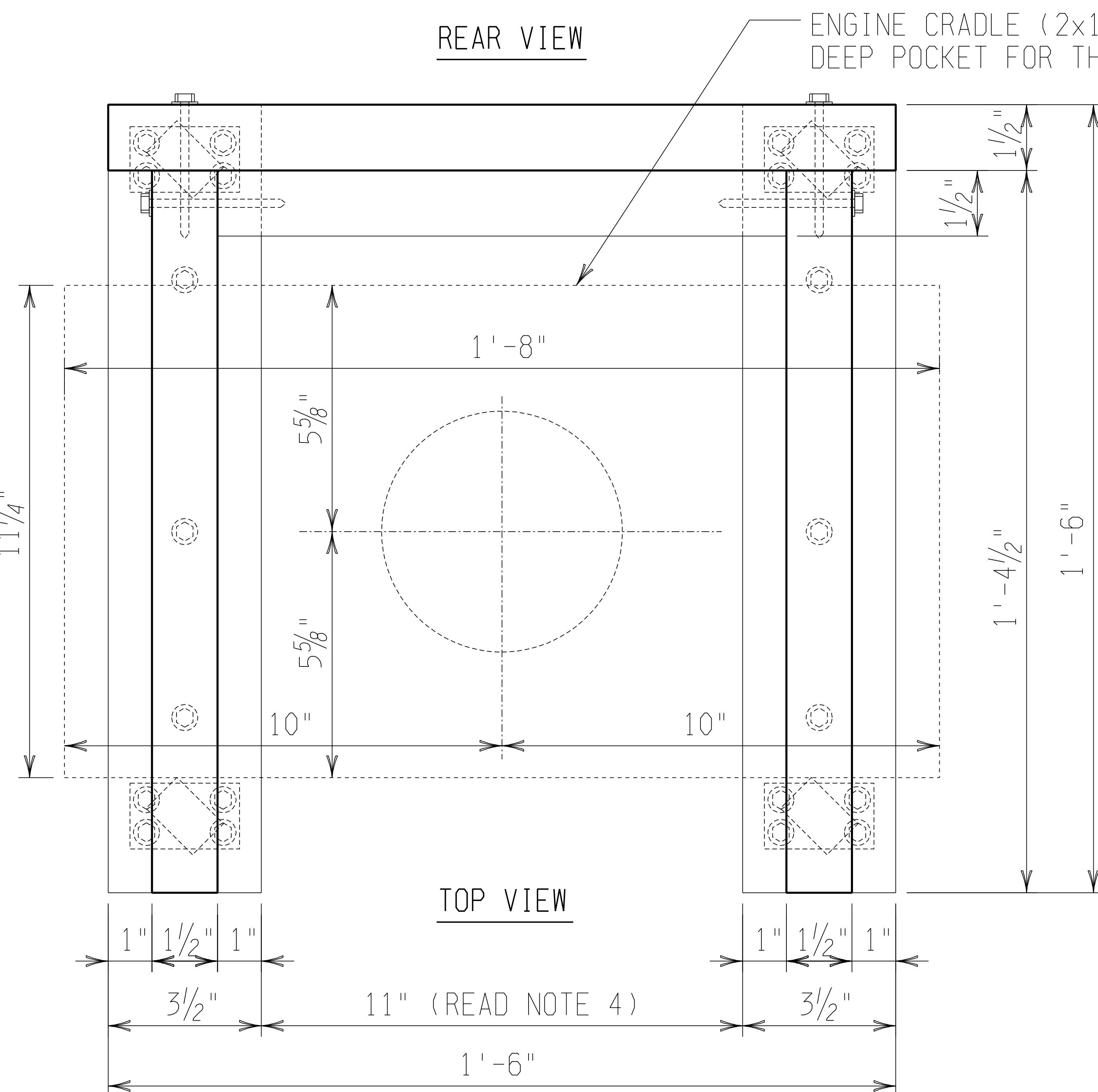
NOTE THE 1/4" DEEP x 1 1/2"
WIDE DADO (GROOVE) FOR THE
UPRIGHT 2x6 TO SIT IN

READ
NOTE
2



SIDE VIEW

READ
NOTE
2



TOP VIEW

GENERAL NOTES

1. USE 3" x 1/4" LAG SCREWS (EXCEPT FOR THE CASTERS) WITH A FLAT WASHER UNDER THE HEAD. GLUE ISN'T NECESSARY.
2. THE HEIGHT DEPENDS ON YOUR CASTER. I USED HEAVY DUTY CAST METAL CASTERS.
3. ATTACH THE CASTERS WITH 1" x 1/4" LAG SCREWS. WHEN THE DOLLY IS LOADED WITH THE WEIGHT OF THE ENGINE, THE CASTER FITS TOGETHER TIGHTER, AND THE FLANGE THAT HOLDS THE WHEEL MAY RUB ON A SCREW HEAD, REQUIRING A LITTLE FILING. WATCH FOR THAT AND KEEP YOURS CLEAR.
4. IMPORTANT! MEASURE YOUR FLOOR JACK AND BE SURE IT WILL FIT BETWEEN THE HORIZONTAL LEGS, AND ADJUST THE DIMENSIONS ACCORDINGLY.

JOHN HARTRANFT
SEPTEMBER 9, 1999

DISCLAIMER: THIS DRAWING IS A GIFT AND REPRESENTS A SUGGESTED MEANS OF TRANSPORTING AIR COOLED VW ENGINES ONLY AND THERE ARE NO WARRANTIES EITHER EXPRESS OR IMPLIED THAT ONCE FABRICATED THIS ITEM WILL WORK FOR THE PURPOSE THE ACTUAL FABRICATOR OF THE ITEM INTENDS. UPON ACCEPTANCE OF THIS DRAWING ALL PERSONS RELYING THEREON ASSUME ALL RISKS ASSOCIATED WITH ITS FABRICATION AND USE AND BY ITS FABRICATION AND USE THEREBY RELEASE AND HOLD THE DONOR AND DRAFTSMAN OF THIS DRAWING HARMLESS FROM ANY AND ALL DAMAGE CLAIMED BY ANY AND ALL PERSONS REGARDLESS OF THEIR RELATIONSHIP TO DONOR AND DRAFTSMAN.

AIR COOLED VW ENGINE DOLLY
SCALE: 3" = 1'-0"